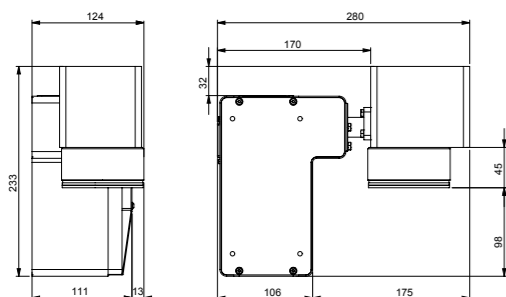
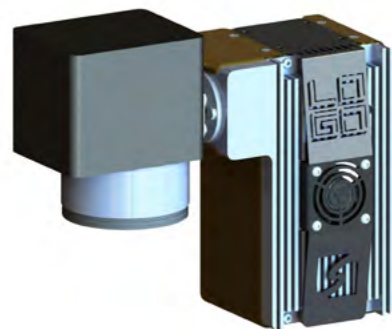


## LOGO oem



### EXTERNAL CONNECTIONS:

Ethernet cable to PC  
Power supply  
Safety interlock

### CONNESSIONI ESTERNE:

Cavo ethernet verso PC  
Alimentazione elettrica  
Sicurezza interlock

### OPTIONAL

Motorized spindle

### OPTIONAL

Mandrino motorizzato

### TECHNICAL DATA - DATI TECNICI

Wavelength · Lunghezza d'onda	1064 nm
Peak Power · Potenza picco	20 KW
Pulse Duration · Durata impulso	4 ns
Frequency · Frequenza	Fixed · Fissa
Dimensions (W x D x H) · Dimensioni (L x P x A)	124 x 280 x 233 mm
Weight · Peso	6 Kg

## LOGO marking laser

Its design is innovative. Its size is compact. It 's easy to use and to combine with every laser beam features, especially focused on precious metal process: this is LOGO, the ideal laser marking solution for every type of end-user.

*Design innovativo, ingombri ridottissimi, semplicità di integrazione ed utilizzo uniti a caratteristiche del fascio laser specificatamente mirate alla lavorazione dei preziosi: questo è LOGO, il laser di marcatura ideale per ogni utilizzatore.*

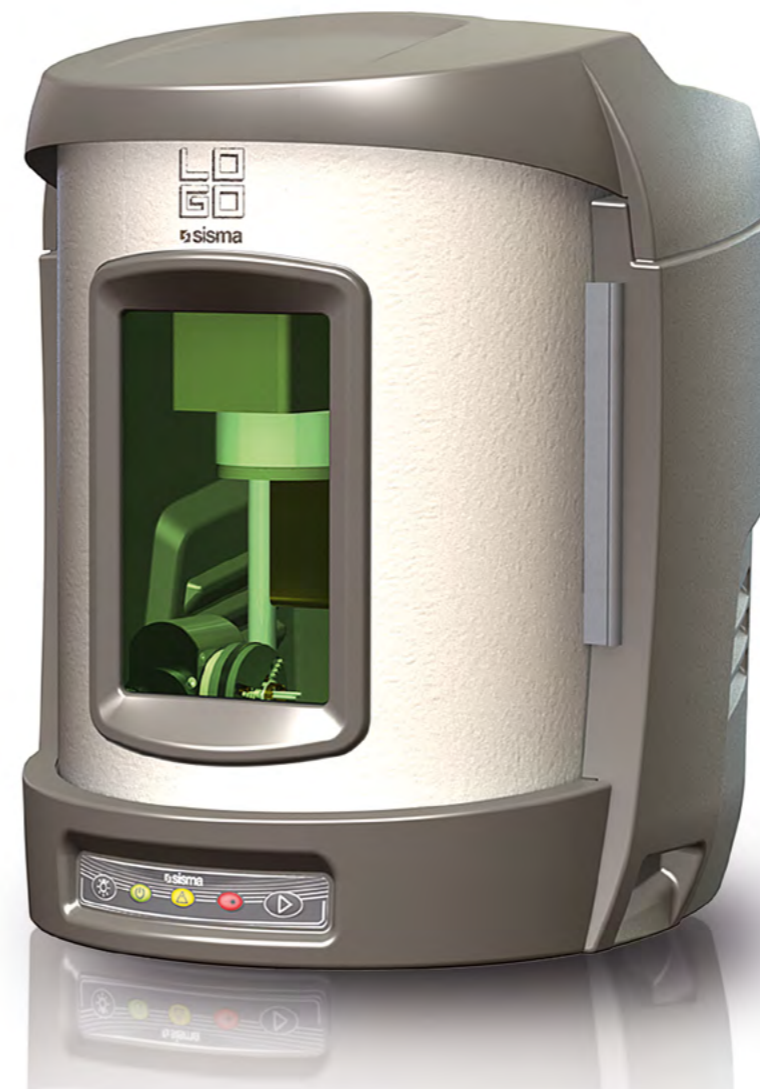


### MATERIALS · MATERIALI

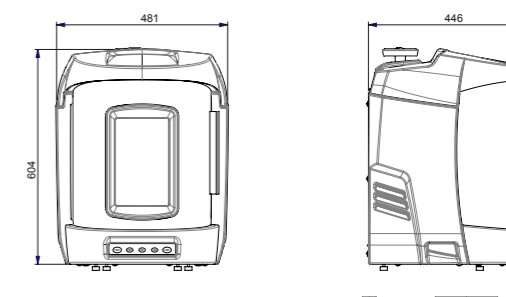
Precious metals · Metalli nobili  
Steel · Acciaio  
Brass · Ottone  
Generic Metals · Matelli generici  
Aluminium · Alluminio  
Polycarbonate · Policarbonato  
ABS  
Laser paper · Carta laserabile

### PROCESSES · LAVORAZIONI

Satin finishing · Satinatura  
Marking · Marcatura  
Engraving · Incisione leggera  
Photo marking · Foto incisione



## LOGO class 1



### EXTERNAL CONNECTIONS:

Ethernet cable to PC  
Power supply

### CONNESSIONI ESTERNE:

Cavo ethernet verso PC  
Alimentazione elettrica

### OPTIONAL

Motorized spindle

### OPTIONAL

Mandrino motorizzato

### TECHNICAL DATA - DATI TECNICI

Wavelength · Lunghezza d'onda	1064 nm
Peak Power · Potenza picco	20 KW
Pulse Duration · Durata impulso	4 ns
Frequency · Frequenza	Fixed · Fissa
Dimensions (W x D x H) · Dimensioni (L x P x A)	481 x 446 x 604 mm
Weight · Peso	35 Kg

jewellery

LOGO



COMPANY WITH QUALITY SYSTEM CERTIFIED BY DNV GL = ISO 9001 =

01/2016

LOGO

SISMA Offices and Services in the WORLD

SISMA LAB - Laser & Automations
via dell'Artigianato, 26 - 36060 Romano d'Ezzelino (VI) - Italy
ph. +39 0424 510050 - fax +39 0424 514035 - info@sismalab.com - www.sismalab.com

SISMA AREZZO
via P. Gobetti, 23 - 52100 Arezzo - Italy
ph. +39 0575 250960 - fax +39 0575 250402 - info@sismacentro.it - www.sismacentro.it

SISMA LASER ESPAÑA, s.l.
Ctra. Castellar nº 541 - 08227 Terrassa - Barcelona - España
ph./fax +34 93 4800635 - info@sismalaser.es - www.sismalaser.es

SISMA LASER - DE
Neumeyerstrasse 48 - 90411 Nurnberg - Germany
ph. +49 (911) 5676947 - mobile +49 (151) 41928809 - webmaster@sisma-laser.de - www.sisma-laser.de

SISMA MEA
Kuyumcukent, zemin kat, 1. sk., no.34, Yenibosna - Istanbul - Turkey
ph.+90 212 520 7679 - info@dstmachine.com - www.sisma.com

MOSCA - RUSSIA
Yuzhnoportovaya Str. 5/1 - Office 450 - 115088 Moscow - Russia
Ph. +7 (495) 665 49 32 - ilgiz.sisma@gmail.com

DUBAI - UAE - DMCC Dubai Metals & Commodities Centre
Bldg. n°3, Ground Floor, Shop n°F02 - ph. +971(4) 3688737 - fax +971(4) 3688738
dubai@sisma.com - www.sisma.com

SISMA LTA CO. LTD
2/3 Moo 14, Bangna Tower A, 16th floor, Bangna-Trad Road, K.M. 6.5 Bangkaew, Bangplee, Samutprakam 10540
ph.+66 2 797 0730 - fax +66 2 797 0701 - sisma.thailand@gmail.com - www.sisma.com

WUXI - CHINA
Wuxi, Jiangsu 214071 - China 300 Qinan, Qing Qi Lu, APT 201
ph. +86 5105109595 - fax +865105109595 - wx.sisma@public1wx.js.cn - www.sisma.com

SISMA MESSICO - Sisma Laser Systems, S.A. DEC.V.
Parque Rio Grijaiva 25, casa 3, Col. Cuauhtemoc, Delegacion Cuauhtemoc - CP. 06500, Mexico D.F., Mexico
ph +52 5552560344 - fax +52 55 52867784
diego@sismalasersystems.com - www.sismalasersystems.com

www.saraffi.agency

SISMA S.p.A.
via dell'Industria, 1
36013 Piovene Rocchette (VI) Italy
tel.(+39) 0445 595511
fax (+39) 0445 595595
info@sisma.com
www.sisma.com

jewellery

